

SHANGHAI  
AUTO  
MUSEUM

上海汽车博物馆



概 述

B R I E F

# COEXISTENCE

—INDUSTRY & ART



## 工业与艺术——并 存

上海汽车博物馆坐落于上海国际汽车城汽车博览公园内，建筑面积2.8万平方米。展览面积逾1万平方米，于2007年1月17日正式向公众开放，是全国首家融合汽车历史、人物、技术和创意活动为一体的行业博物馆。

As the first auto industry museum in China, Shanghai Auto Museum integrates auto history, figures, technology and innovation together. Located in the Auto Expo Park of Shanghai International Automobile City, the museum covers an area of 28,000 sqm including 10,000 sqm exhibiting size, open to the public on Jan. 17th, 2007.



—  
临 展

E X H I B I T I O N

# HERITAGE

— HISTORY & FUTURE





**1楼临展厅** 充足的自然光线，大气简洁的风格；适于举办各类品牌发布会、艺术临展等大型活动。

Temporary exhibiting in the 1st floor enjoys rich natural lighting with elegant and simple style; suitable for large scale events like brand release, art show, etc.

## 历史与未来——传承

**4楼临展厅** 利于分割，搭建灵活，配套设施完善；适于时尚派对、产品发布、各类艺术临展、车辆展示、广告拍摄等。

Temporary exhibiting in the 4th floor owns a big space with ingenious design, easy for free separation, complete in supporting infrastructures; suitable for activities like art events, automobile exhibiting, advertising, etc.



休 闲

R E C R E A T I O N

# APPRECIATION

## —VISION & SENSING

**主题休闲吧** 汽车元素与怀旧经典的完美结合，适于各类冷餐会、沙龙、私人聚会。

Theme Lounge is a perfect combination of auto elements and nostalgic style, available for buffet, saloon and gathering.





## 视觉与感官——享受



**屋顶花园** 与休闲吧相连接，内外景致贯通，客人尽可在此享受汽车文化与自然美景的交融，是私人派对的绝佳场所。

Roof Garden connects to theme lounge, merging the scenery inside and outside for the visitors to enjoy the excellent combination of nature and auto culture, perfect venue for private party.

---

# 会 议

C O N F E R E N C E



---

**综合会议厅** 功能完善，布局自由，可适用各种现代化会议，教学、培训。

---

Grand Conference Room (5th Floor) has complete function and free layout to meet the various needs for all kinds of modern conference, teaching and training activities.

商务与学术——**严 谨**





**4楼贵宾厅** 与屋顶花园相连接，布局宽敞大气，格调高雅，可供贵宾休憩交流

VIP Room (4th Floor) is linked to the roof garden with spacious layout and elegant style, rest and communication for VIPs.



## METICULOSITY

### — BUSINESS & SCHOLARSHIP



**5楼贵宾厅** 与通透的落地窗将汽车博览公园景色尽收眼底。在这里可以展开一场置身公园中的高端商务会议。

VIP Room (5th Floor) provides a wide view to cover the whole scenery of Auto Expo Park through transparent French windows, placing high-end business conferences surrounded by green.

景观

L A N D S C A P E



建筑与园林——交融

# INTEGRATION

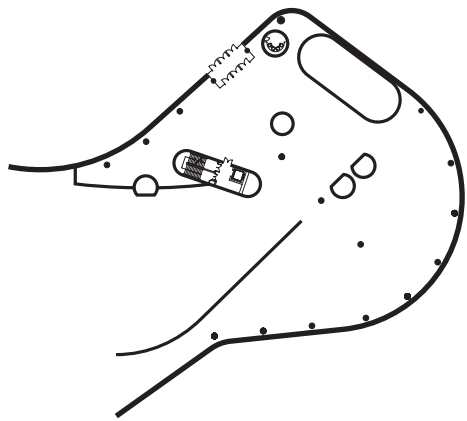
## — ARCHITECTURE & LANDSCAPE



**汽车博览公园** 上海国际汽车城重要的“城市绿肺”，以汽车工业的发达地区为主题，分别建设了具有地方特色的五个园中园。景观轴线的巧妙布置，特色建筑的星罗密布，使整个公园碧波荡漾，绿意盎然，移步换景，美不胜收。

Auto Expo Park is “Green Lung” for Shanghai International Automobile City. There are 5 feature areas themed as different developed auto industry regions with specially designed scenery route and dotted distinctive construction. The park enjoys the blue waves and greenery to form beautiful perspectives one after another along with the moving of the visitors.

## 场地信息

**1楼临展厅**面积：900M<sup>2</sup>

形式：临展、舞台搭建、商务活动等

容量：200人

说明：可根据客户需求摆放座椅，费用另计

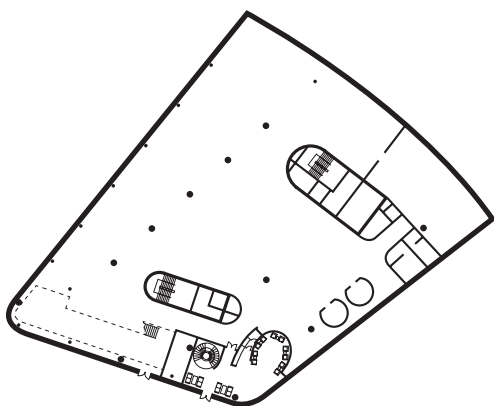
Exhibition Area (1st Floor)

Size: 900 sqm

Function: Temporary Exhibiting / Stage Performance / Business Events

Capacity: 200 persons

\*The placement of table and chair can be adjusted according to clients' requirement with additional charge.

**4楼临展厅**面积：1200M<sup>2</sup>

形式：临展、舞台搭建、商务活动等

容量：500人

说明：可根据客户需求摆放座椅，费用另计

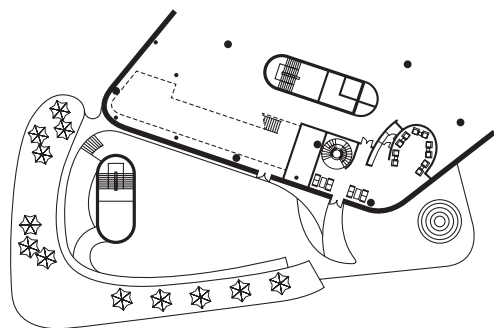
Exhibition Area (4th Floor)

Size: 1,200 sqm

Function: Temporary Exhibiting / Stage Performance / Business Events

Capacity: 500 persons

\*The placement of table and chair can be adjusted according to clients' requirement with additional charge.

**主题休闲吧,屋顶花园**面积：600M<sup>2</sup>

形式：休闲酒吧

容量：50人

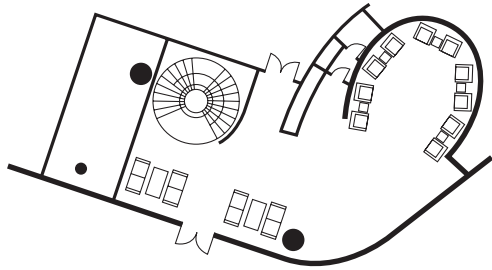
说明：4人卡座6个，小圆桌3个，吧台，音响

Auto Lounge &amp; Roof Garden (4th Floor)

Size: 600 sqm

Capacity: 50 persons

Setting: Gets Stuck Sofa (6), Small Round Table (3), Bar Counter, Audio Equipment



#### 4楼贵宾厅

面积：108M<sup>2</sup>

形式：整间

容量：20人

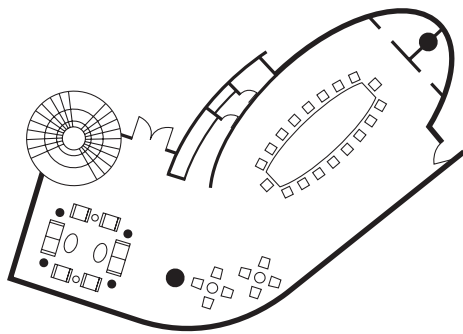
说明：单人沙发12个，双人沙发4个，茶几6个

VIP Room (4th Floor)

Size: 108 sqm

Capacity: 20 persons

Settings: Single Sofa (12), Dual Sofa (4), Tea Table (6)



#### 5楼贵宾厅

面积：145M<sup>2</sup>

形式：整间

容量：24人

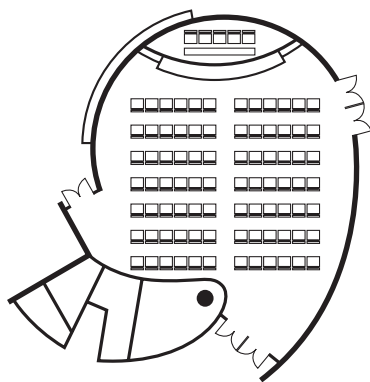
说明：椭圆形会议桌(16人)，单人沙发4个，双人沙发2个

VIP Room (5th Floor)

Size: 145 sqm

Capacity: 24 persons

Settings: Oval-shaped Conference Table (16 persons),  
Single Sofa (4), Dual Sofa (2)



#### 综合会议厅

面积：221M<sup>2</sup>

形式：教室型/剧场型/回字

容量：75/100/60人

说明：主席台(8人座)，椅子100把，

投影仪1个，无线话筒4个，音响4只

Grand Conference Room (5th Floor)

Size: 221 sqm

Specification: Classroom / Theatre / Hollow Square

Corresponding Capacity: 75 / 100 / 60 persons

Settings: Rostrum (8 persons), Chairs (100), Beamer (1),  
Wireless Microphone (4), Sound Speaker (4)





**联系方式:**

地址: 上海市安亭博园路7565号  
 邮编: 201805  
 电话: 021-69550038

**自驾路线:**

上海市中心—武宁路—京沪高速(G2)—安亭汽车城出口—博园路右转  
 上海市中心—外环线(或中环线)—京沪高速(G2)—安亭汽车城出口—博园路右转  
 上海市中心—金沙江路—博园路

**公共交通:**

陆安高速线(终点站: 中潭路, 靠近中山北路): 博园路站下  
 安虹线(市内终点站: 淞虹路地铁站): 博园路站下  
 轨道交通: 轨道交通11号线支线安亭终点站下, 步行10分钟

**Contact**

Address: No. 7565 Boyuan Road, Anting, Shanghai 201805  
 Tel: 021-69550038

**Driving**

Jing-Hu Expressway(G2)—Anting Autocity Exit—Turn Right on Boyuan Road

**Public Transportation**

Take the Bus Lu-An Route / An-Hong Rout / Line 11

